

# FIREPLACE KIT SYSTEM FROM BRUNNER



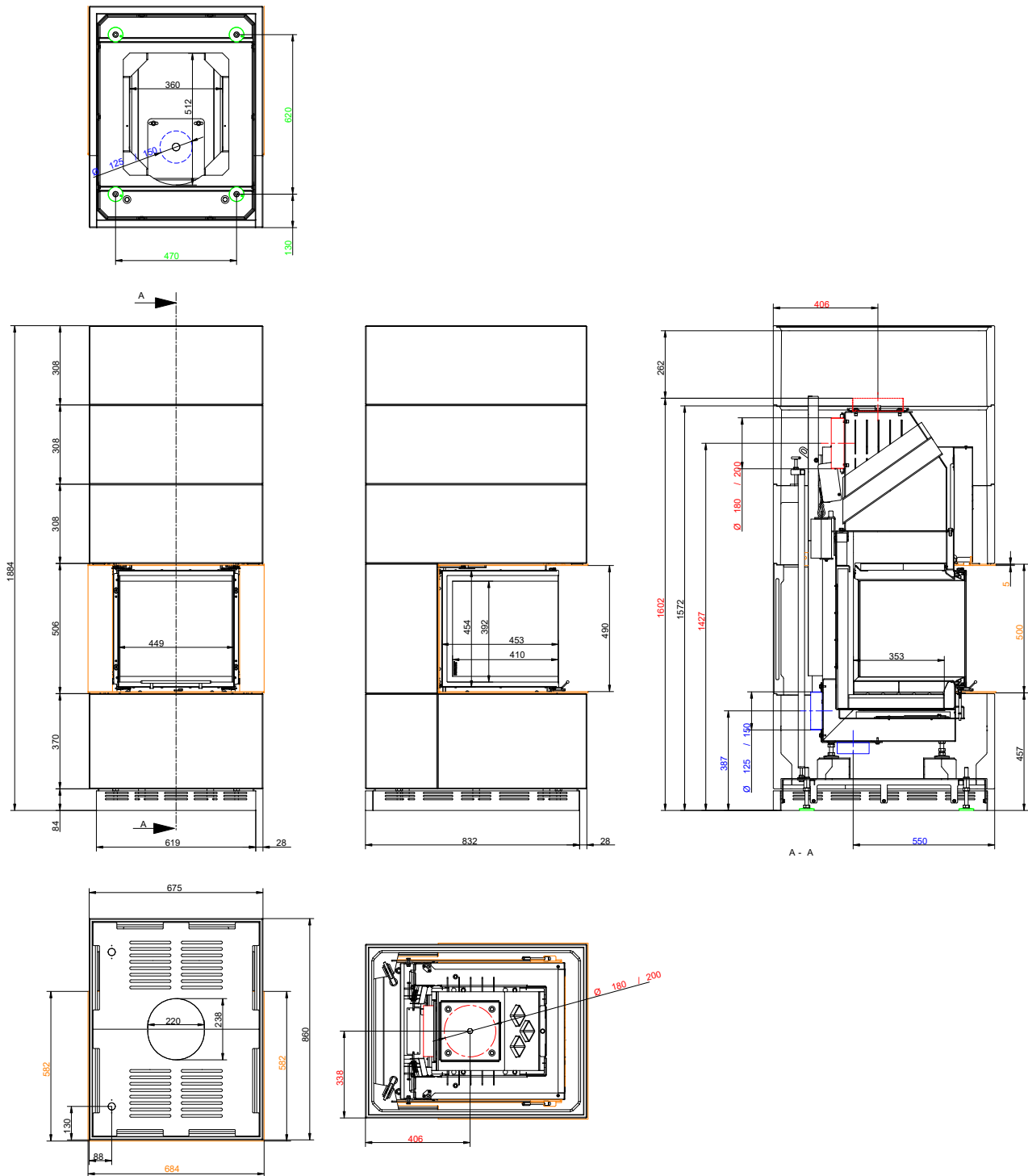
## BSK Panorama 45-45-45-45

State: 2025-10-09



**BRUNNER**<sup>®</sup>

# Dimension sheets - BSK Panorama 45-45-45-45



... with steel smoke hood and Feuerstisch (wide frame)

We suggest for CAD planning Palette CAD. Permanent updated drawings: [www.brunner.de](http://www.brunner.de)

Frames/ flue gas outlet connection/ combustion air supply connection/ front variants/ support bearing are marked in color.

# Planning and installation - BSK Panorama 45-45-45

Tested according to	EN 13229	
<b>Data for functional demonstration</b>		
Rated heat power	kW	7
Fire wood volume	kg/h	2.1
Flue gas mass flow	g/s	8.5
Flue gas temperature	°C	210
Necessary supply pressure <sup>1)</sup>	Pa	12
Combustion air consumption	m <sup>3</sup> /h	21
Combustion air connection Ø	mm	125
<b>Cladding components <sup>2)</sup></b>		
Foot print (W x D)	mm	675 x 860
Overall height	mm	1884
Height of extension ring	mm	-
<b>Minimal distances</b>		
to mounting wall	cm	5
to mounting wall with heat protection panels	cm	0
to combustible mounting wall	cm	10
to combustible mounting wall with heat protection panels	cm	5
from top of fireplace to ceiling	cm	50
<b>Cross-section of gratings <sup>3)</sup></b>		
exhaust warm air	cm <sup>2</sup>	960
Recirculation air	cm <sup>2</sup>	680
<b>Minimum distances in front of the combustion chamber, glass ceramic / glass ceramic coated (GKB)</b>		
for combustible parts	cm	≥ 120 / ≥ 80
<b>Weight</b>		
Total weight	kg	520
<b>Meets requirement/limit values for:</b>		
EU / Germany	Ökodesign / 1. BImSchV (Stufe 2)	

- 1) Damper flap recommended  
 2) Quality features of the cladding components in concrete look (fair-faced concrete class 2-3)

#### **Dimensional tolerances of the casting mold parts**

Straightness: +/- 2 mm/m

Length/width/thickness: +/- 2 mm

Squareness: +/- 2 mm

Flatness: +/- 2,5 mm

#### **Surface to visible side**

Textur: closed and largely uniform; repair areas with color changes and hairline cracks permissible.

Porosity: max. three holes with diameter <10 mm and depth <10 mm (reference area 100x100 mm).

Colour shade: uniform, large-area light/dark discolouration and cement haze permissible; no rust and dirt spots as well as different bulk layers.

**Note:** deviations in color tone (e.g. extension rings) can be adjusted by applying a glaze-like paint (our recommendation: Decol.asur Matt tinted in the colour shade Schiefer16, Caparol).

With the BRUNNER revision set (Art. No. 900300), touch-up work can be carried out on the cladding components.

- 3) Existing convection air openings. If the construction differs from the supplied system kit (e.g. construction up to the ceiling or closed construction), the information in the data sheet is decisive for carrying out the cross section of the convection air openings.